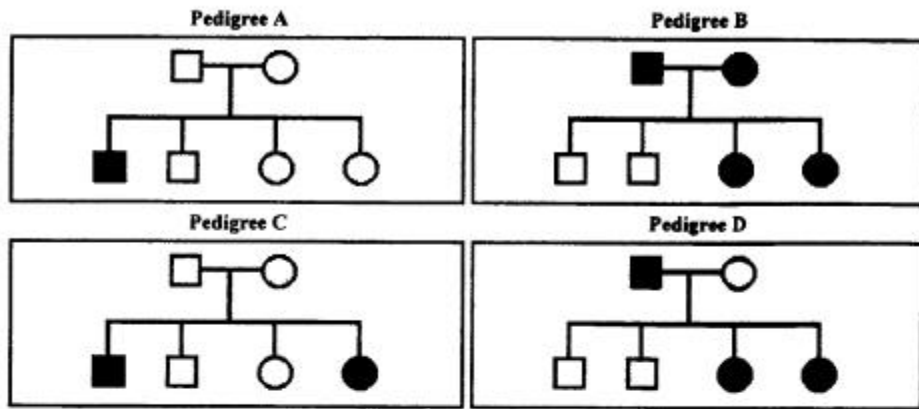


## Matings Involving Segregation at One Gene

Parents		Children
Father	Mother	
$B_f B_f$	$B_m B_m$	all $B_f B_m$
$B_f B_f$	$B_m b_m$	$1/2 B_f B_m$ $1/2 B_f b_m$
$B_f B_f$	$b_m b_m$	all $B_f b_m$
$B_f b_f$	$b_m b_m$	$1/2 B_f b_m$ $1/2 b_f b_m$
$B_f b_f$	$B_m b_m$	$1/4 B_f B_m$ $1/4 B_f b_m$ $1/4 b_f b_m$ $1/4 B_m b_f$
$b_f b_f$	$b_m b_m$	all $b_f b_m$

(Reference: <http://wsrv.clas.virginia.edu/~rjh9u/bluemend.html>)



Pedigree Activity

**Eye Color (brown-eyed is dominant)**

Child 1: brown-eyed male

Child 2: brown-eyed male

Child 3: blue-eyed female

Child 4: blue-eyed female

Using the information above, predict the genotypes of the parents and grandparents. Construct a Pedigree chart below showing the traits for the grandparents, parents, and children.